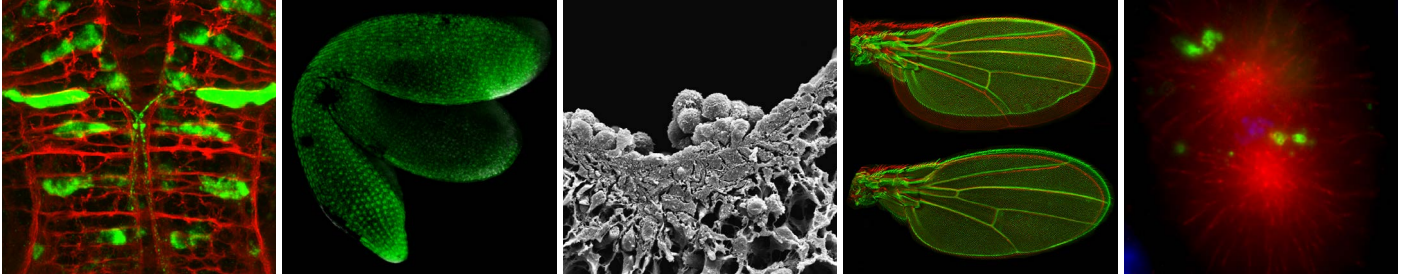


# Team Leader position

at the Institut de Biologie Paris-Seine  
for the Laboratory of Developmental Biology



## The Developmental Biology Laboratory of the Institut de Biologie Paris Seine (IBPS) is seeking to recruit one or two talented group leaders.

The [IBPS](#) is a leading center for fundamental interdisciplinary research in biology. The [IBPS-Developmental Biology Laboratory](#) comprises 17 research groups studying development at multiple scales, using a variety of model organisms coupled with integrated, quantitative and interdisciplinary approaches.

The appointed group leaders will initiate innovative research programs addressing fundamental principles of development. The applicants will be selected on their scientific excellence and their potential to complement and synergize with existing research within the department and the institute.

The IBPS benefits from a lively collaborative scientific environment, supported by excellent core facilities providing state-of-the-art light and electron microscopy, rodent, aquatic model and plant facilities, protein engineering and bioinformatics. IBPS is located on an attractive university campus located in the heart of Paris (5th arrondissement), allowing access to high-level international students trained in the master's programs of Sorbonne Université. Interdisciplinarity at IBPS is supported by the [i-Bio](#) initiative.

Upon their selection, successful applicants will then be expected to obtain secure funding as well as a tenured position at the CNRS, INSERM or Sorbonne Université. The Institute will provide guidance with these steps. Successful applicants will be allocated lab/office space and a starting package, and benefit from a yearly allowance for running costs. They will have permanent free access to the common rooms, equipment and services of the Developmental Biology Laboratory.

Applications should be sent by email to Dr. Sylvie Schneider-Maunoury, the laboratory director, at the following [address](#). Applicants should provide the following information in a single pdf file: a cover letter explaining their motivation to join the IBPS-Developmental Biology Laboratory; a document comprising a CV (2 pages), a summary of the scientific achievements (3 pages) and a research project proposal (4 pages). Two letters of reference should be sent directly by the referees to the lab director.

**The applications and letters of reference must be received by February 15th, 2022**